

# 6.0", 2K TFT LCD

- IPS Technology
- High Resolution
- Wide Viewing Angles
- High Contrast
- Fast Response Times
- Landscape & Portrait View
- Wide Operating Temp.
- HDMI Driver Option

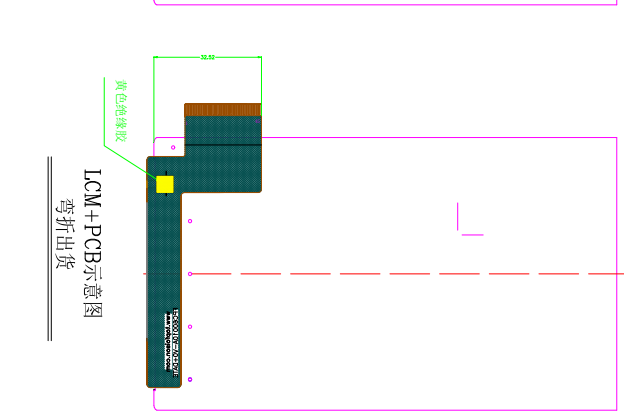
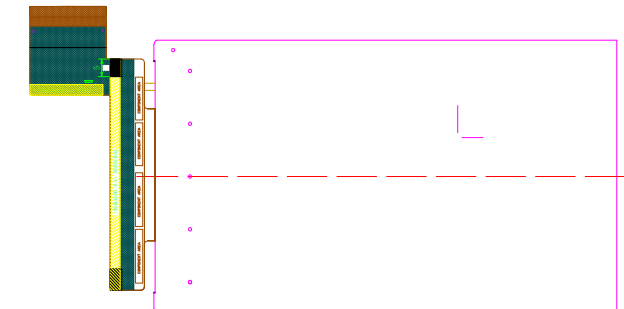
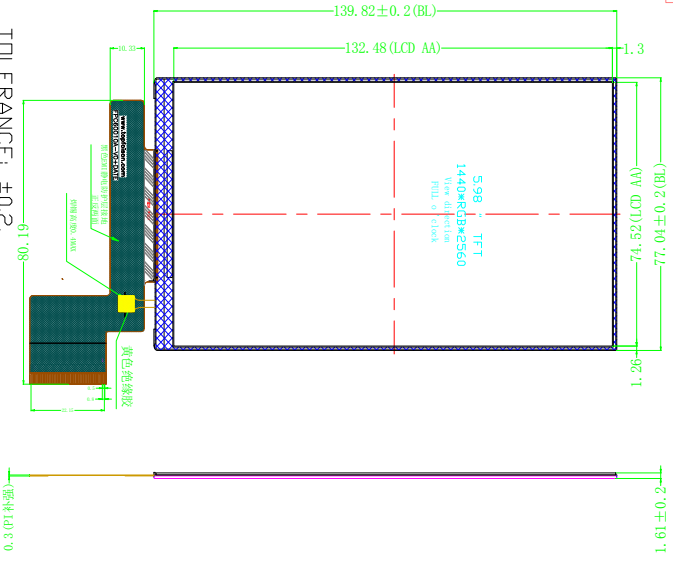


Size	6.0", 1440p TFT LCD
Resolution	1400 x 2560 Pixels
Contrast Ratio	1000:1
Brightness	250 cd/m <sup>2</sup>
Viewing Angles	L/R: 80°/80°, U/D: 80°/80°
Viewing Direction	All
Outline Dimensions (mm)	77.88(W) x 141.05(H) x 1.83(D)
Active Area (mm)	74.52(W) x 132.48(H)
Pixel Pitch (µm)	17.25(W) x 51.75(H)
Interface	MIPI 8-Lines
Driver IC	R63419
Operating Voltage (V)	-0.3 ~ 3.6V
Response Time (ms)	Rise: 20ms, Fall: 15ms
Operating Temperature	-20°C ~ 70°C
Storage Temperature	-30°C ~ 80°C



Craft Data Limited  
Unit 4, Carrera House, Merlin Courtyard  
Gatehouse Close, Gatehouse Industrial Area  
Aylesbury, Bucks, HP19 8DP, United Kingdom  
☎ 01296 332000 📠 01296 334625  
✉ sales@craftdata.co.uk 🌐 www.craftdata.co.uk

LCD朝上组装

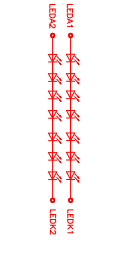


32	GND	1	LEDA1
33	A_CLK_N	2	LEDA2
34	A_CLK_P	3	LEDK1
35	GND	4	LEDK2
36	A_D2_N	5	VDDI
37	A_D2_P	6	VDDI
38	GND	7	TE
39	A_D3_N	8	LED_PWM
40	A_D3_P	9	RESX
41	GND	10	GND
42	AVDD	11	GND
43	AVEE	12	B_D0_N
44	GND	13	B_D0_P
45	GND	14	GND
15	B_D1_N	15	B_D1_N
16	B_D1_P	16	B_D1_P
17	GND	17	GND
18	B_CLK_N	18	B_CLK_N
19	B_CLK_P	19	B_CLK_P
20	GND	20	GND
21	B_D2_N	21	B_D2_N
22	B_D2_P	22	B_D2_P
23	GND	23	GND
24	B_D3_N	24	B_D3_N
25	B_D3_P	25	B_D3_P
26	GND	26	GND
27	A_D0_N	27	A_D0_N
28	A_D0_P	28	A_D0_P
29	GND	29	GND
30	A_D1_N	30	A_D1_N
31	A_D1_P	31	A_D1_P

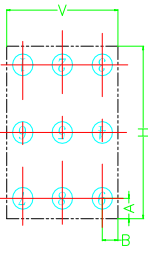
- NOTE:
1. GENERAL TOLERANCE: ±0.2
  2. ( ) IS REFERENCE DIMENSION.
  3. \* CRITICAL DIMENSION
  4. COMPLYABLY ROHS.

Display Type	5.981FT
	NORMALLY BIAK
	TRANSMISSIVE
Viewing Angle	Full O'CLOCK
LCD Driver IC	R63419
Operation Temperature	-20°C TO 70°C
Storage Temperature	-30°C TO 80°C
Interface	
Backlight	WHITE(40mA,22.4V)

LED CIRCUIT DIAGRAM:



Surface luminance uniformity within panel



Measuring Equipment	BK-7
Test pattern	White
Transmissive Mode	Internal(Backlight)
Light Source	A: 5mm B: 5mm
H.V. Active Area	
Uniformity value (Lu)	
Lu=(max/d)	*100%

TITLE:	LCM OUTLINE DIMENSION	PRODUCT MODEL:	TP80010A-W10BN
DRW.ND:	TP-LCM60010A-V1	Ver.:	V
SCALE:	N.T.S.	UNIT:	mm
PRO(3):		SHEET:	1/1

深圳市拓丰源电子有限公司  
TOPPOISON INDUSTRY Co., LIMITED